

# Vulcan & Century Light Duty Tow Truck Control Cable Maintenance

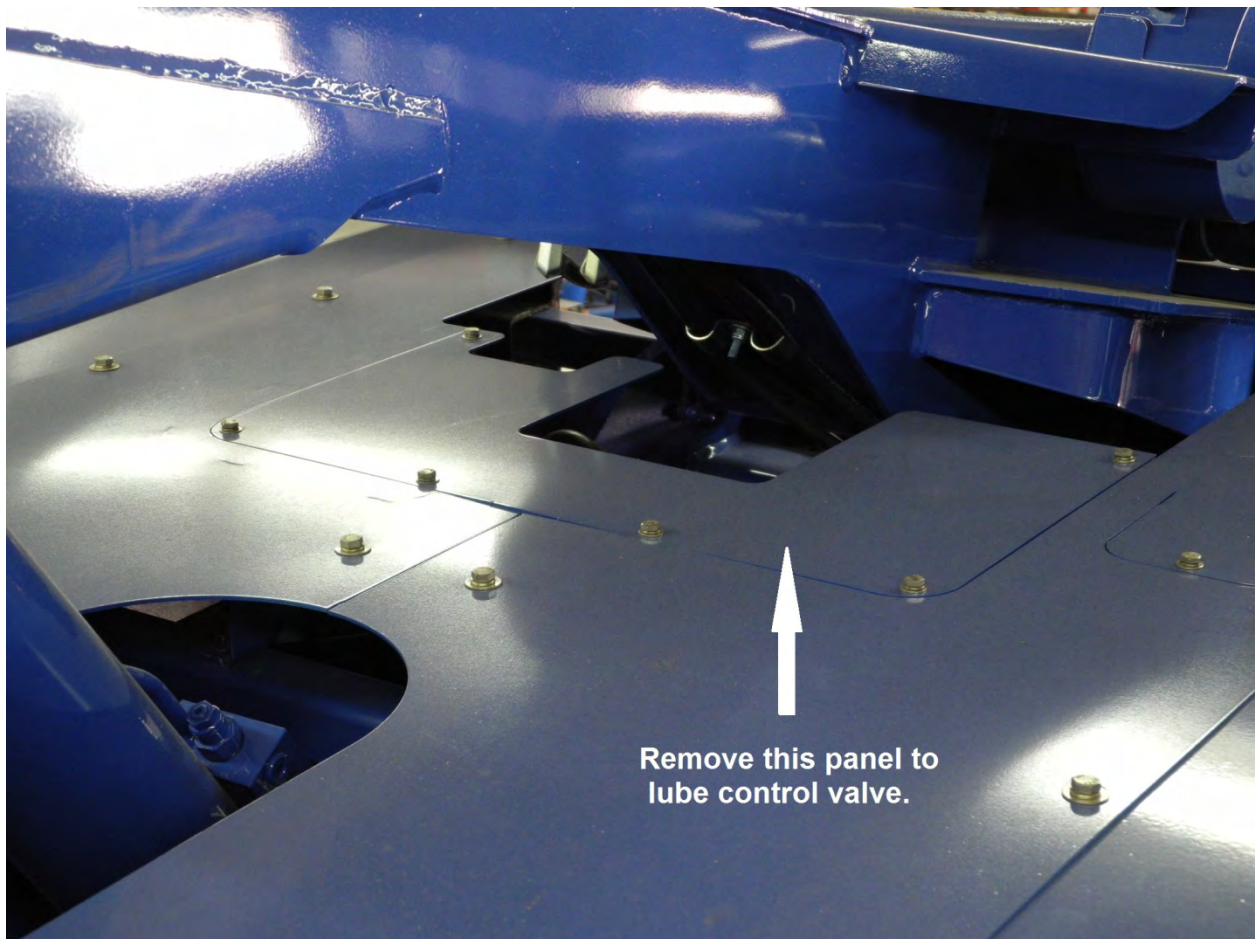
Service Bulletin May 2012

In order to avoid premature wear and seizing up of the control cables on Modular Body Vulcan and Century Wreckers it is absolutely essential that regular cleaning and lubrication of the control cables and associated parts is performed. Adverse weather conditions and lack of use can cause corrosion and build up of dirt that prevents the cables from functioning properly.

We recommend the following steps be taken to ensure proper functionality of the cables at least once a month in the summer and more if necessary in the winter.

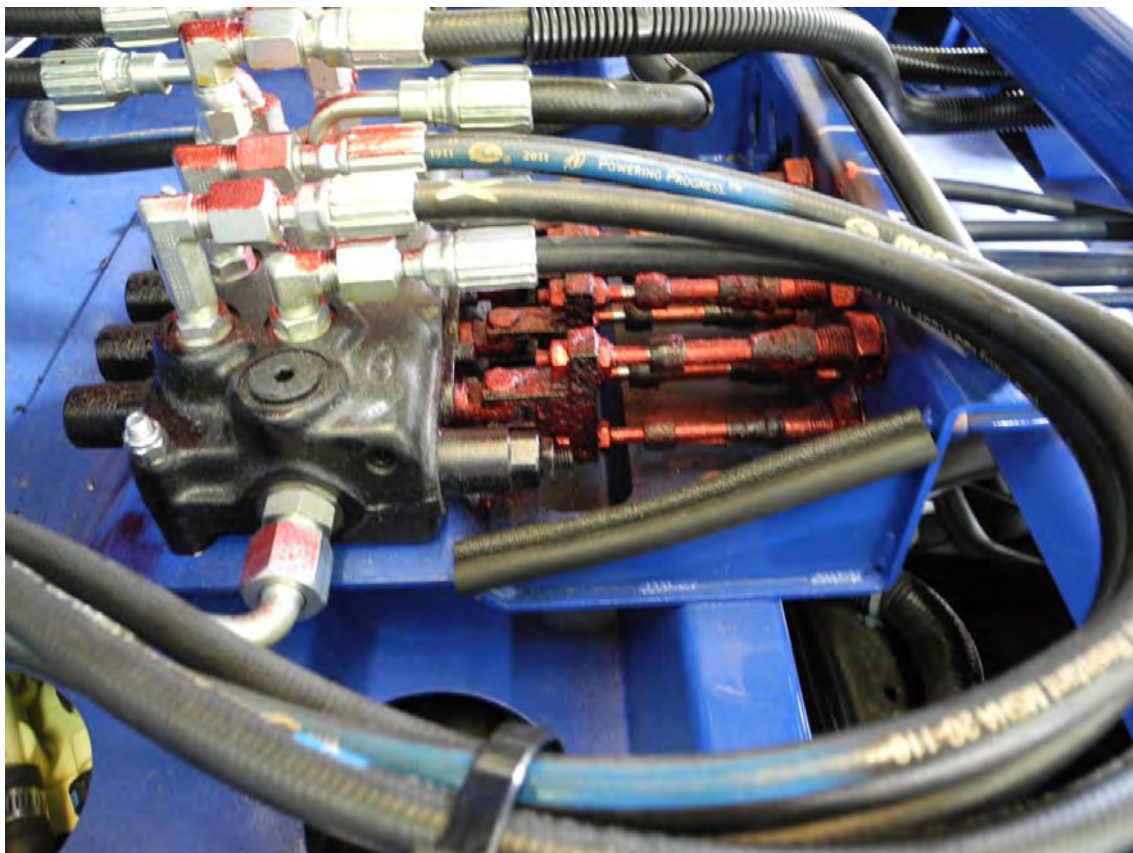
## STEP 1:

Remove inspection plate located on the deck just under the boom



**STEP 2:** Power Wash the control valve under the boom ensuring that dirt and old grease is removed. Avoid direct high pressure power washing of valves with electric solenoids

**STEP 3: Lube Control Valve Linkage.** We recommend the following products: Use the CRC SP-400 first followed by a complete coating of the Muscle Grease.





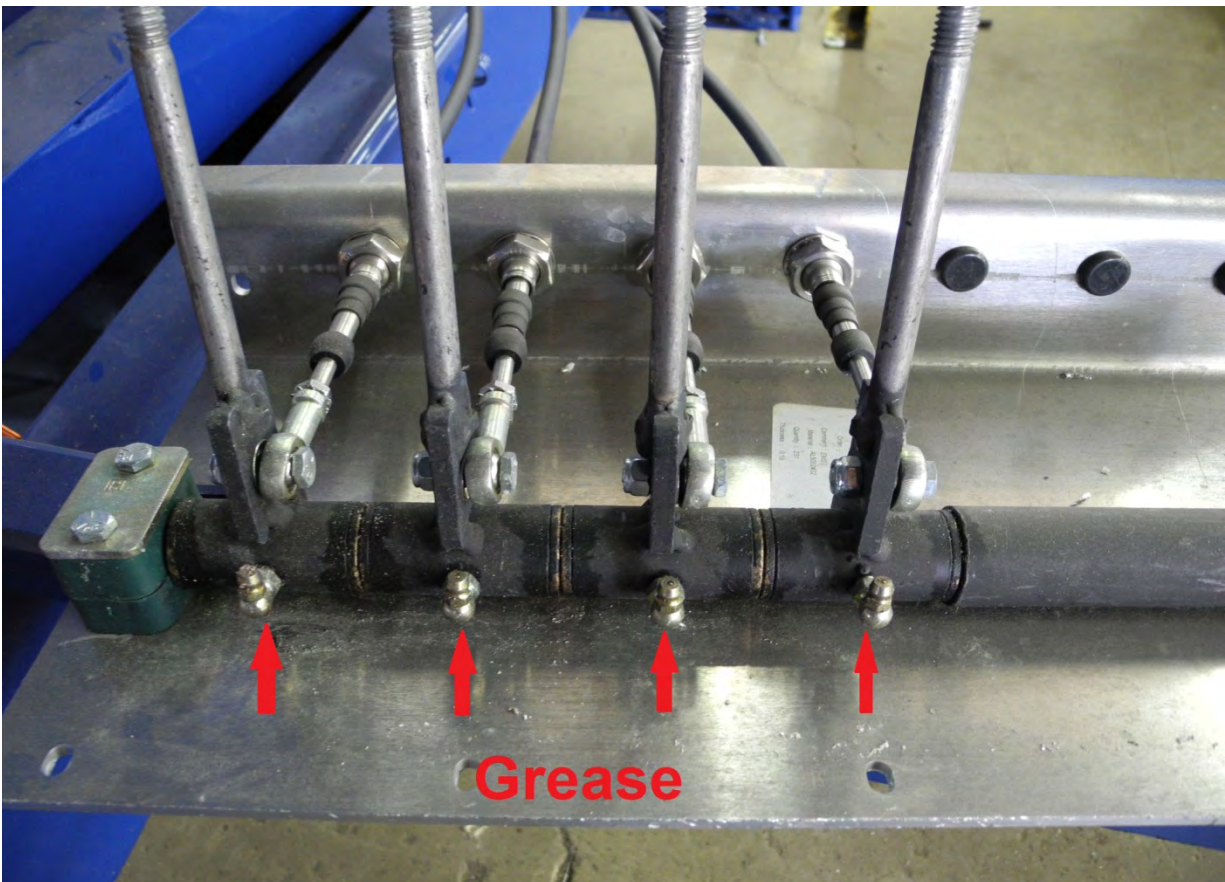
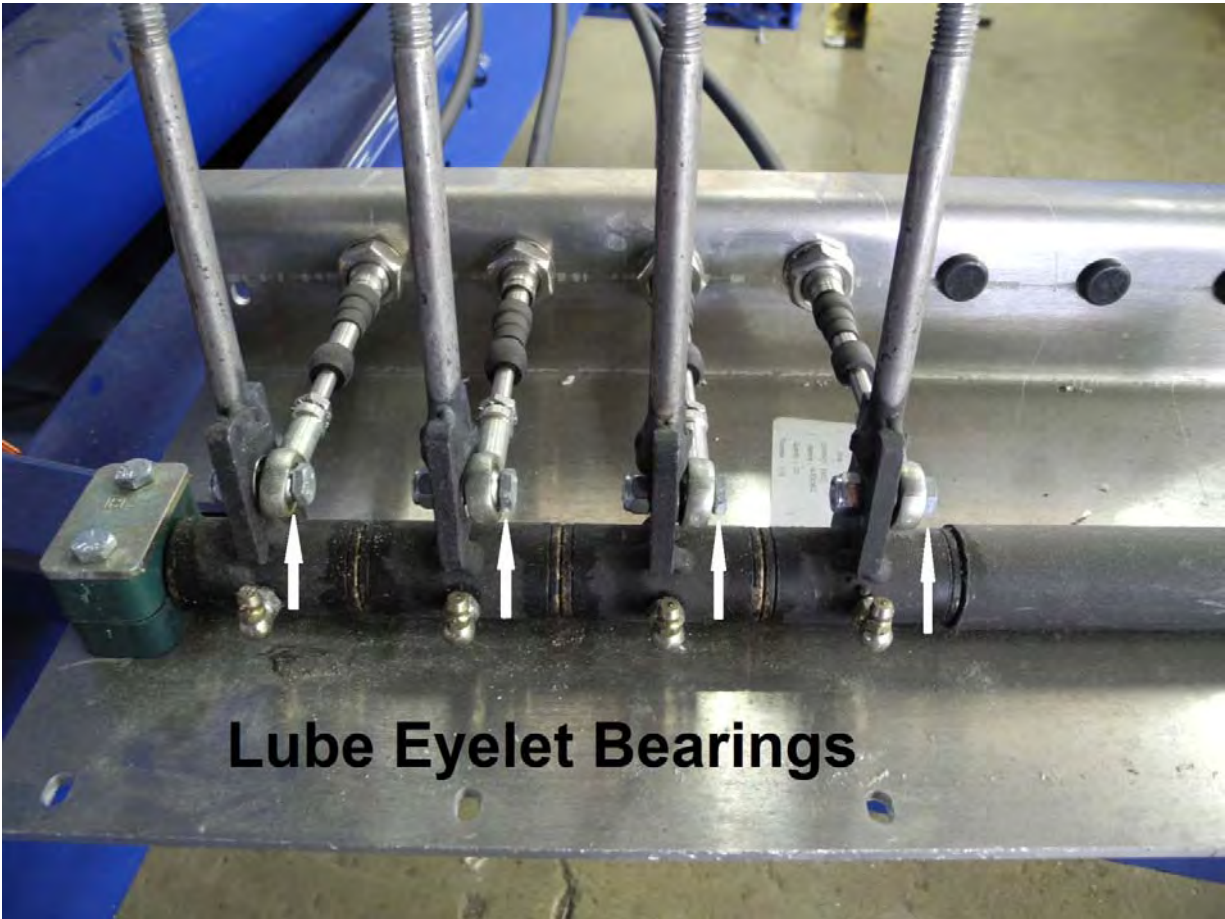
**STEP 4:** Remove Right and Left Control Lever Panels



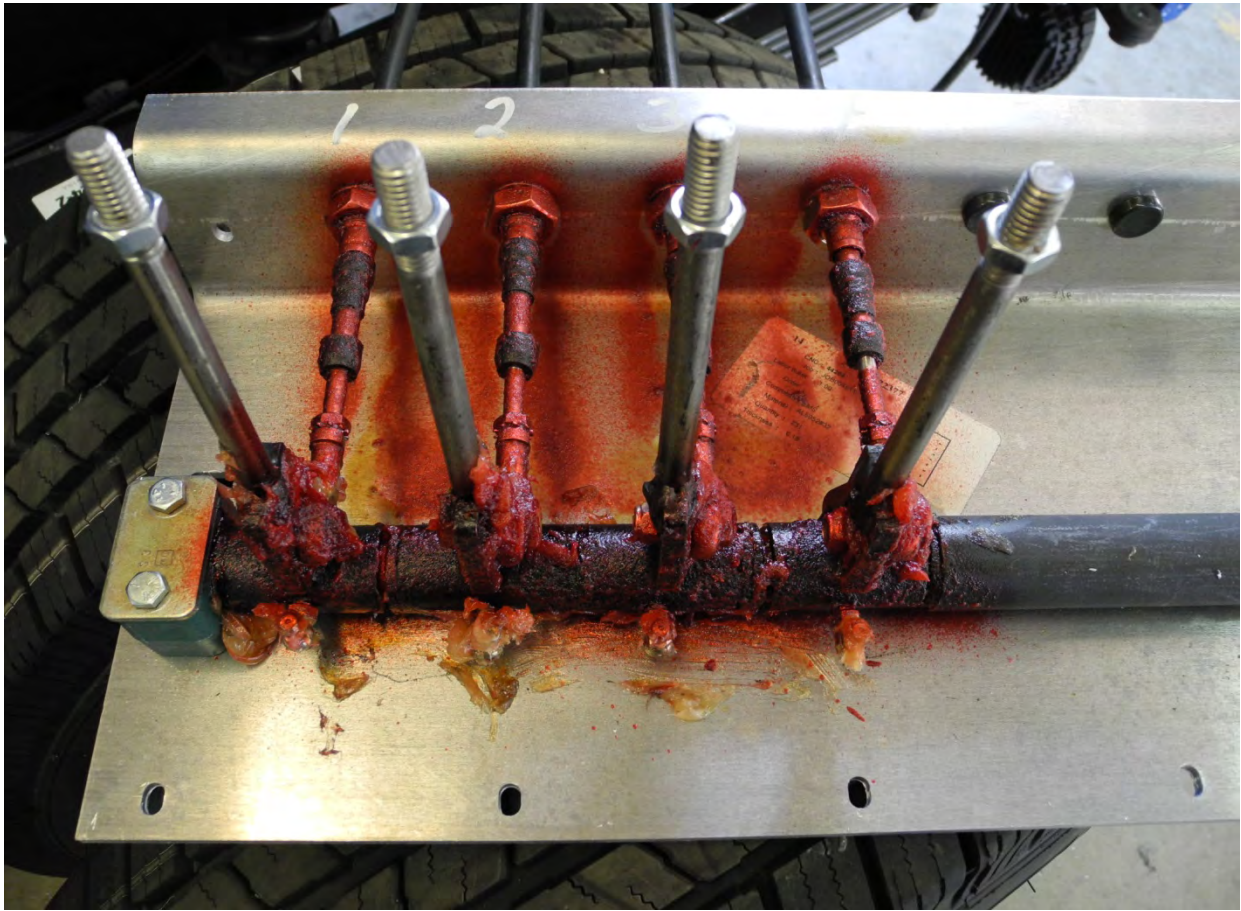
**STEP 5:** Power wash around control levers to remove dirt and old grease.

**STEP 6:** Lube Eyelet Bearings and Grease Fittings. We recommend the following products:  
Use the CRC SP-400 first followed by a complete coating of the Muscle Grease. Use MP Lithium Grease on fittings









**STEP 7:** Reinstall Control Lever and Deck Inspection Covers



**1.800.267.5522**